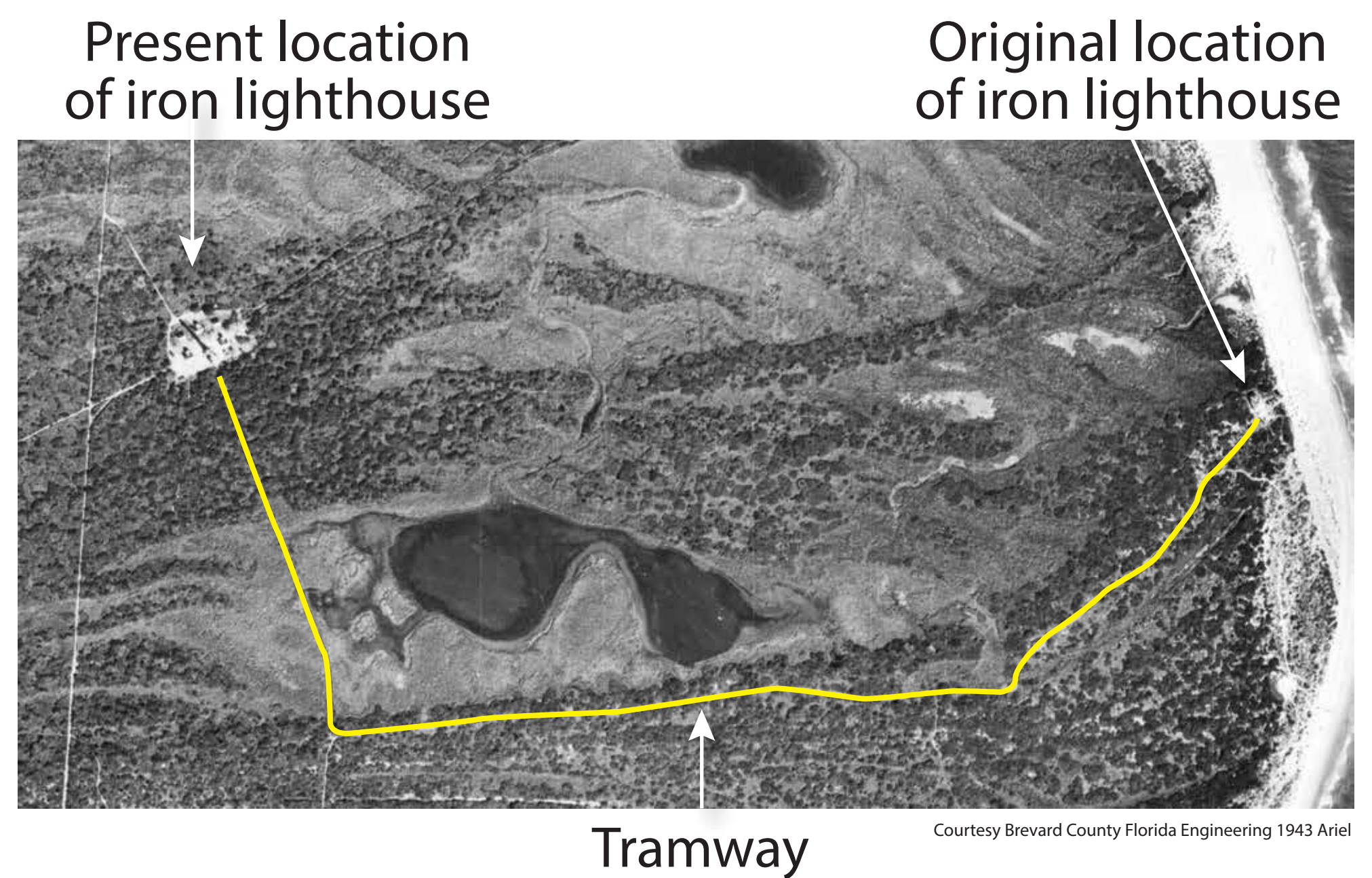


1893 - 1894

How DO You Move a Lighthouse in 1893?

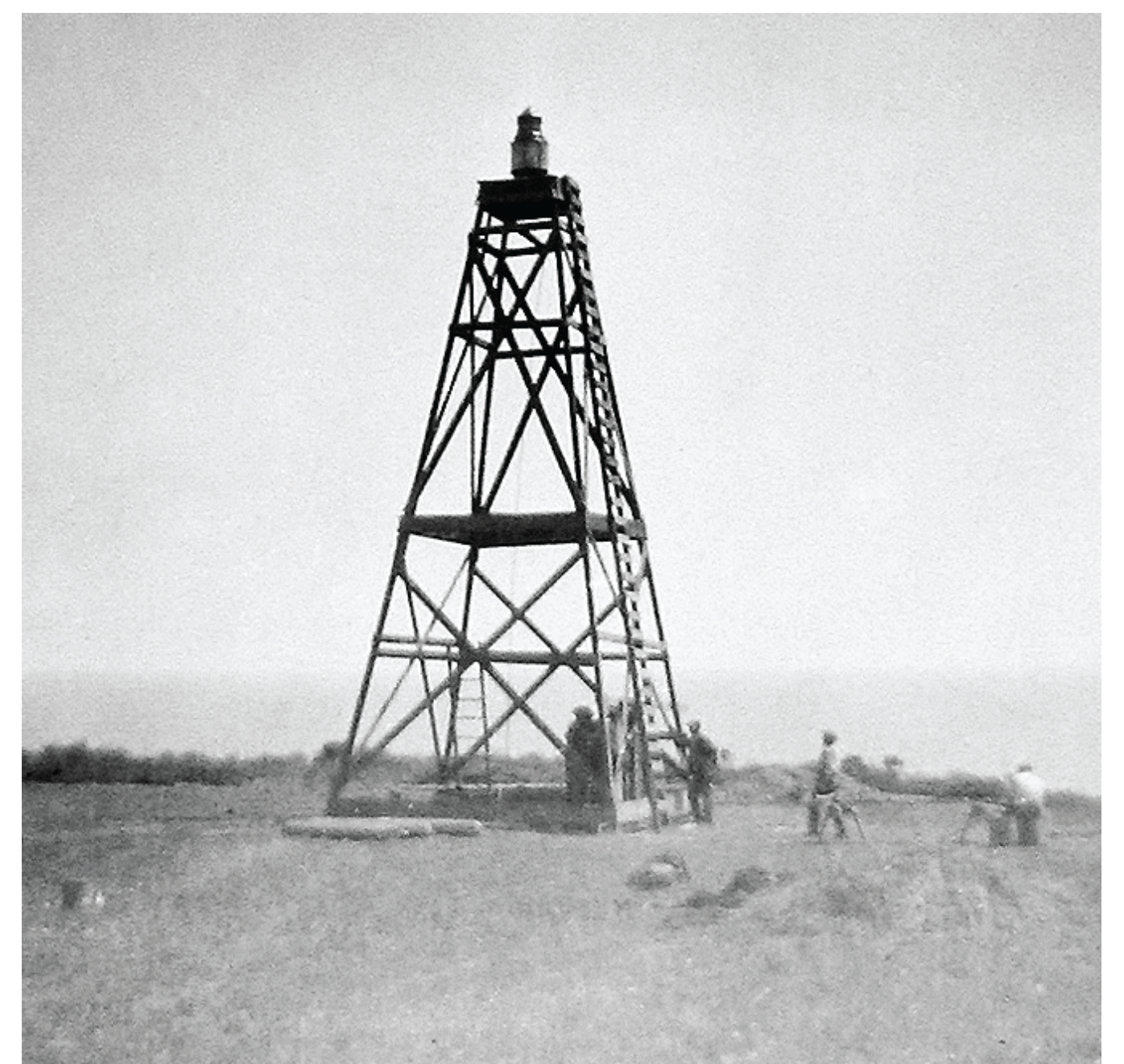
Carting the Pieces One by One

This Lighthouse was designed to be easily taken apart, moved and reconstructed further away from a rising sea level. In October 1893, a team of men began by building a tramway and taking apart the Lighthouse. With the help of the tramway and a mule, they carted every piece one mile to its new location, where you're now standing. They also moved the two Keepers' cottages.



A Temporary Light Helps a Little

In order to keep a light shining for the many months it would take to move the Lighthouse, they built a temporary tower. While not ideal, it was better than keeping the Cape completely dark. It was located near the original Lighthouse site and was 55 feet tall. The design was described as "a square, black, skeletal structure in the shape of a pyramid". It had a 4th Order Fresnel lens and flashed white every 10 seconds. It may have looked similar to the temporary tower shown here.



Putting the Puzzle Back Together - Relit July 25, 1894

Meanwhile, at the new location, they began to reconstruct the Lighthouse using the markings on each piece as a guide.

Rebuilding the Lighthouse was not easy. A tornado hit the new site November 27, 1893, destroying a building and injuring 3 men. It took them 9 months from the time they took the Lighthouse apart to the time it was ready to light again.

According to the Keepers Journal entry of July 25th, 1894, "...the 4th Order beacon was discontinued at 5:14am and 1st Order was lighted at 6:58pm today the 25th."

