

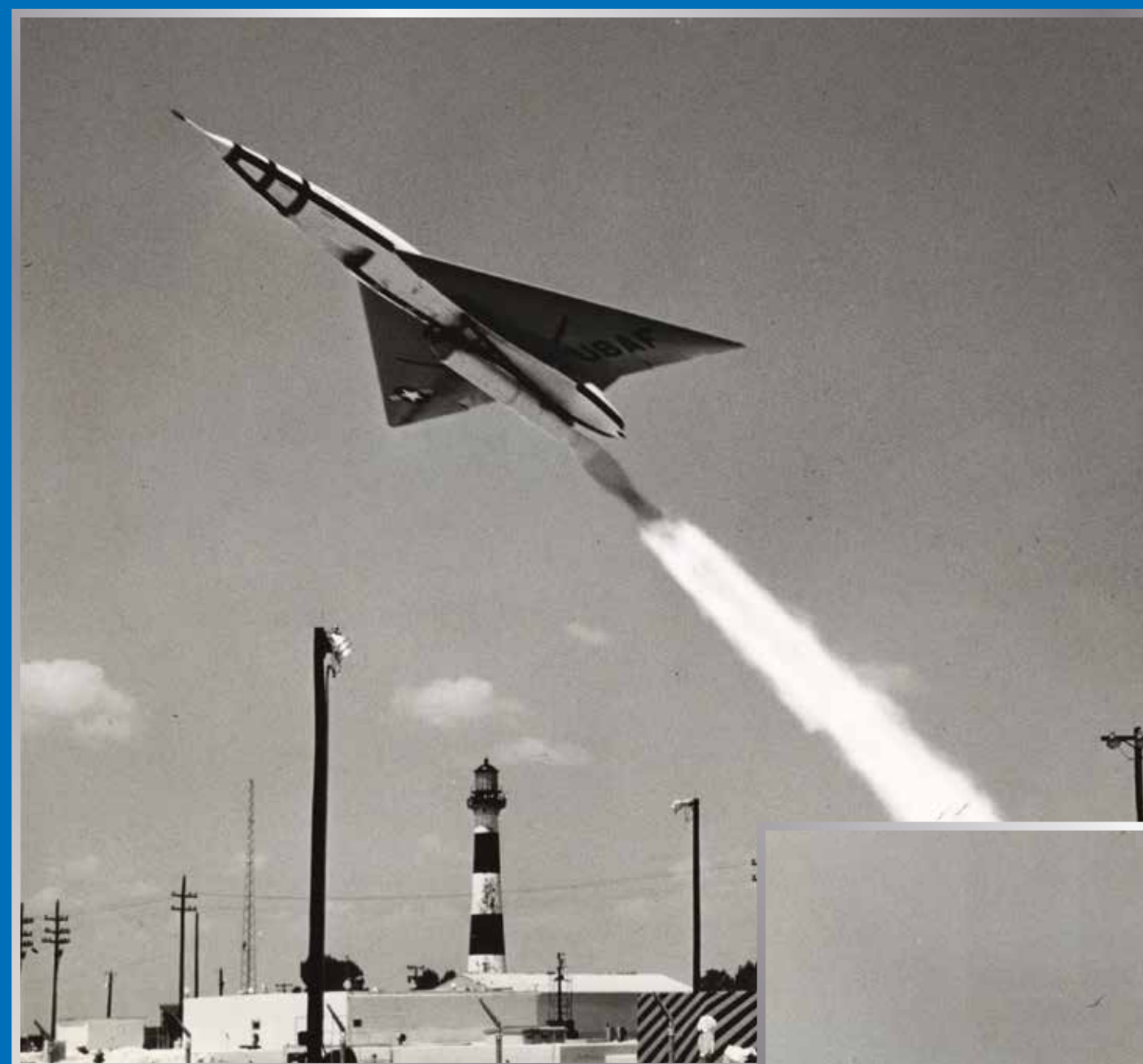
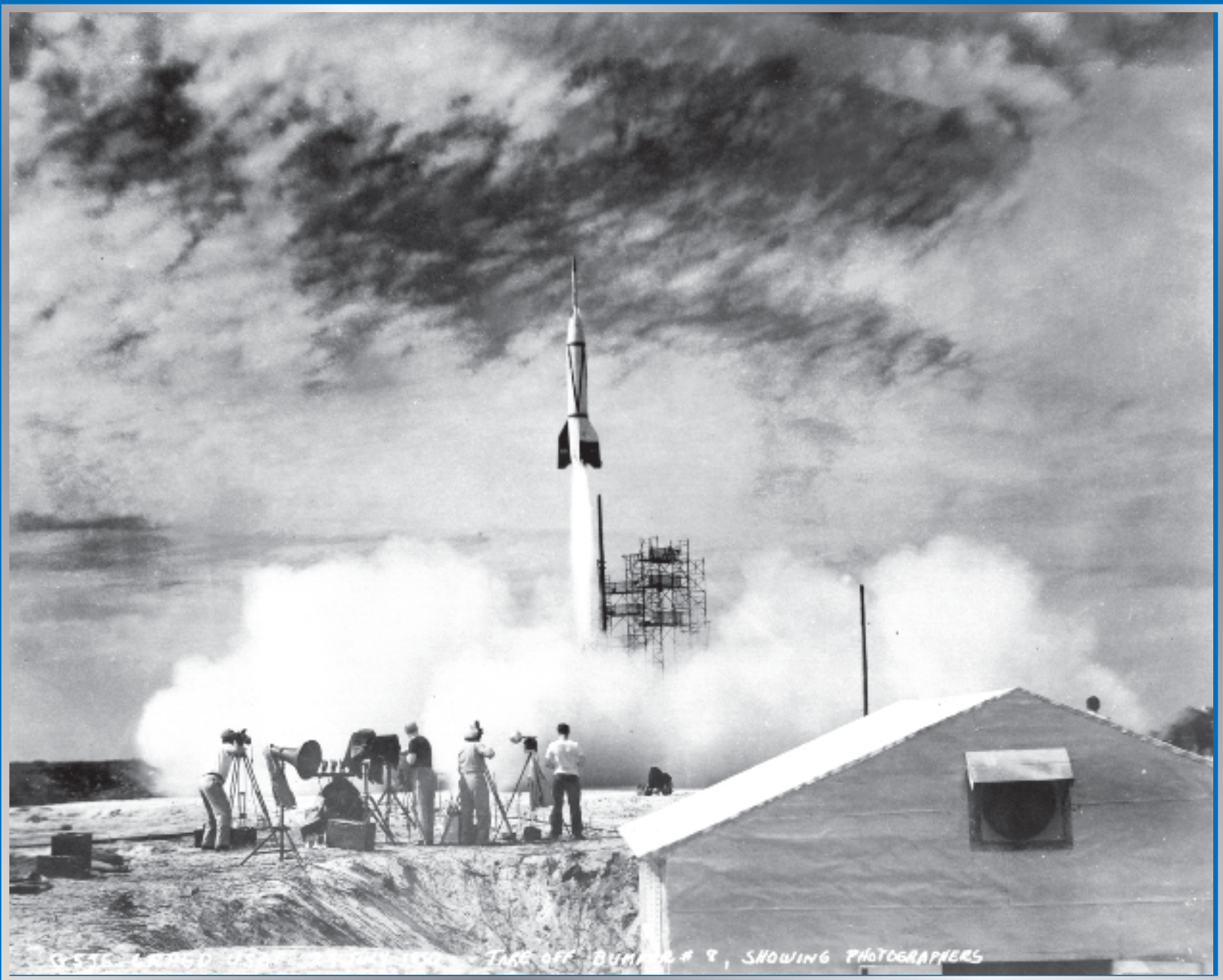
# NEW NEIGHBORS MOVE IN!



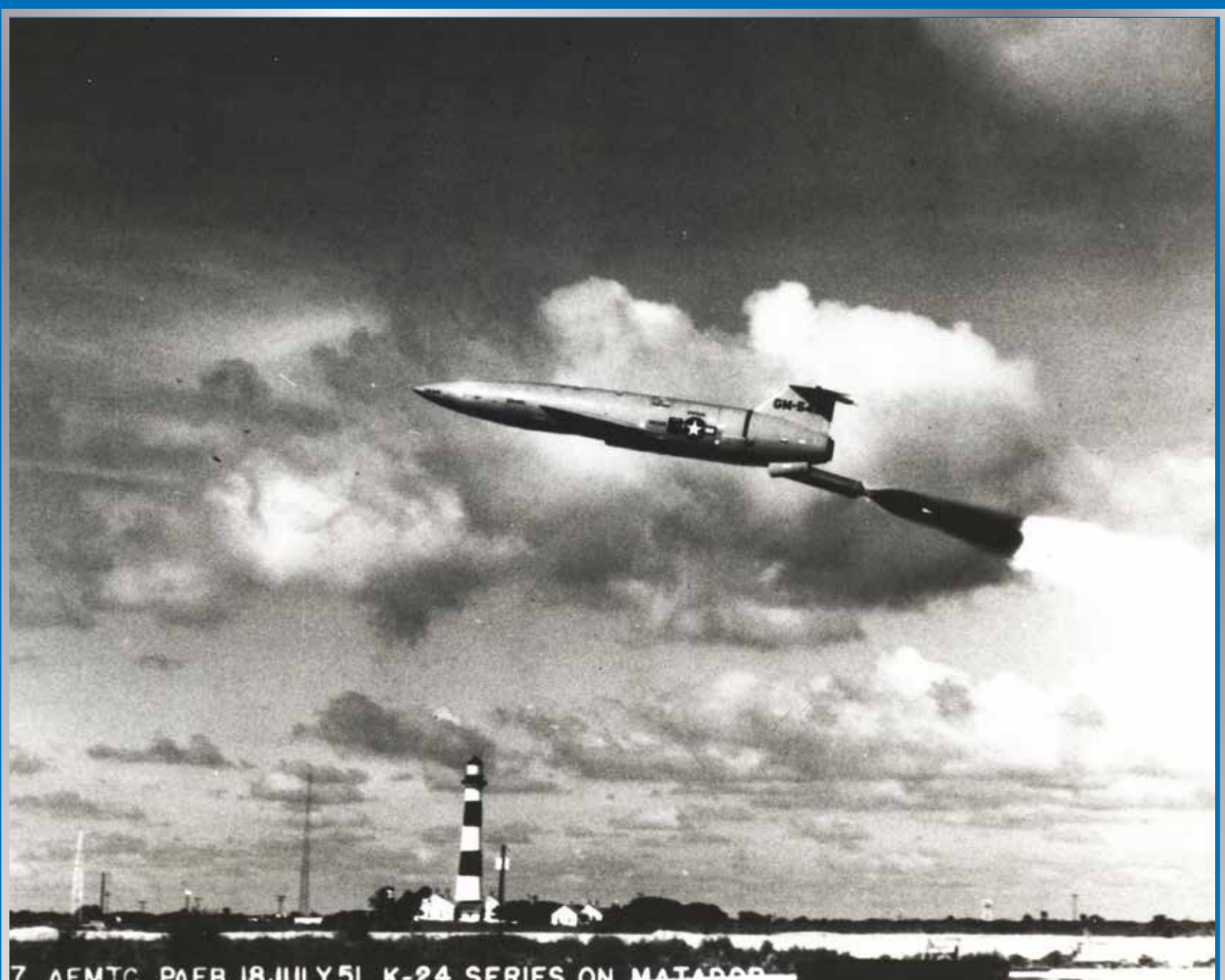
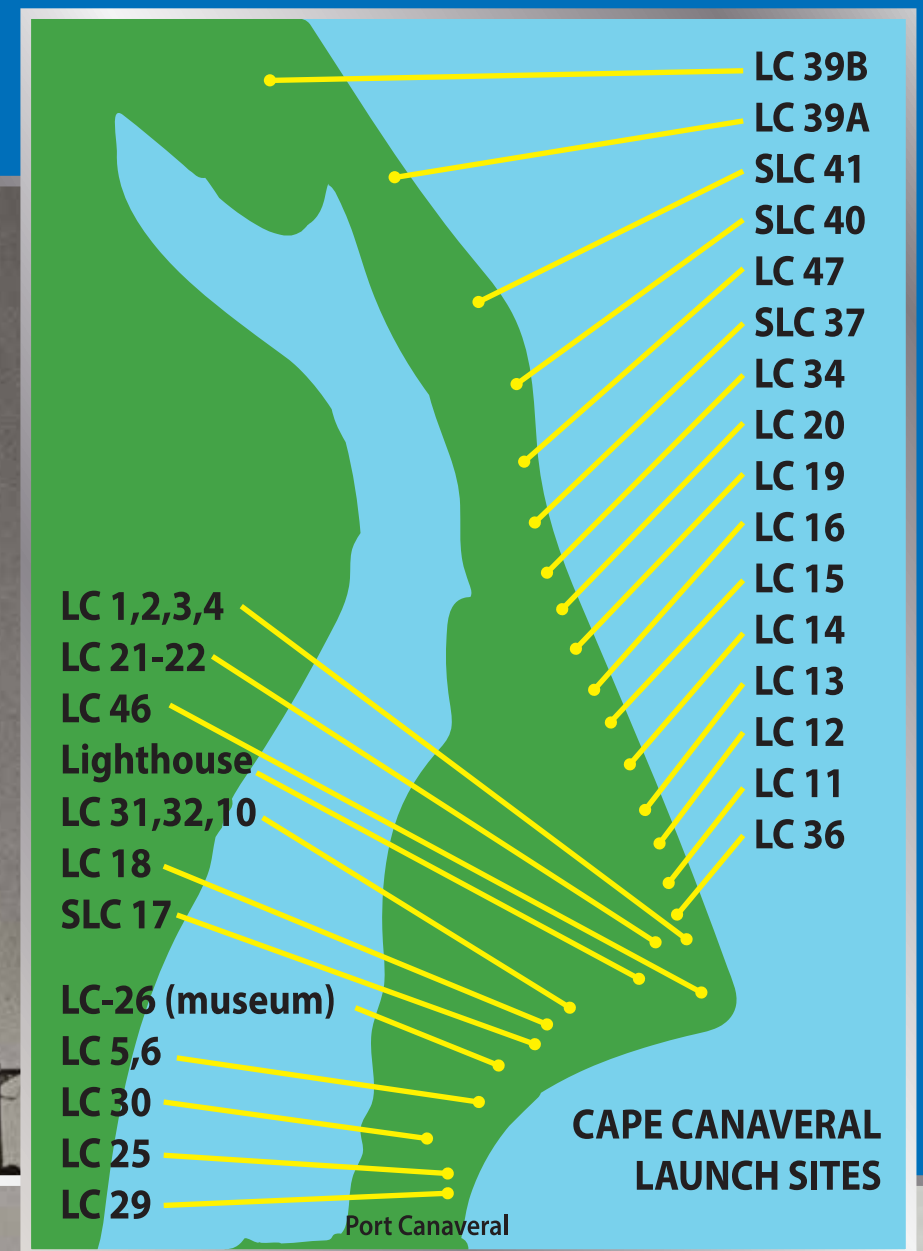
BUMPER 1950

Due to increasing concern over Soviet missile development following World War II, the United States government began to advance their own missile development. The search for a satisfactory test range led to the choice of Cape Canaveral as the site for a US missile test range.

In 1949, President Harry S. Truman signed legislation to officially establish the Joint Long Range Proving Ground at Cape Canaveral & the Banana River Naval Air Station (now Patrick SFB) as a support base.

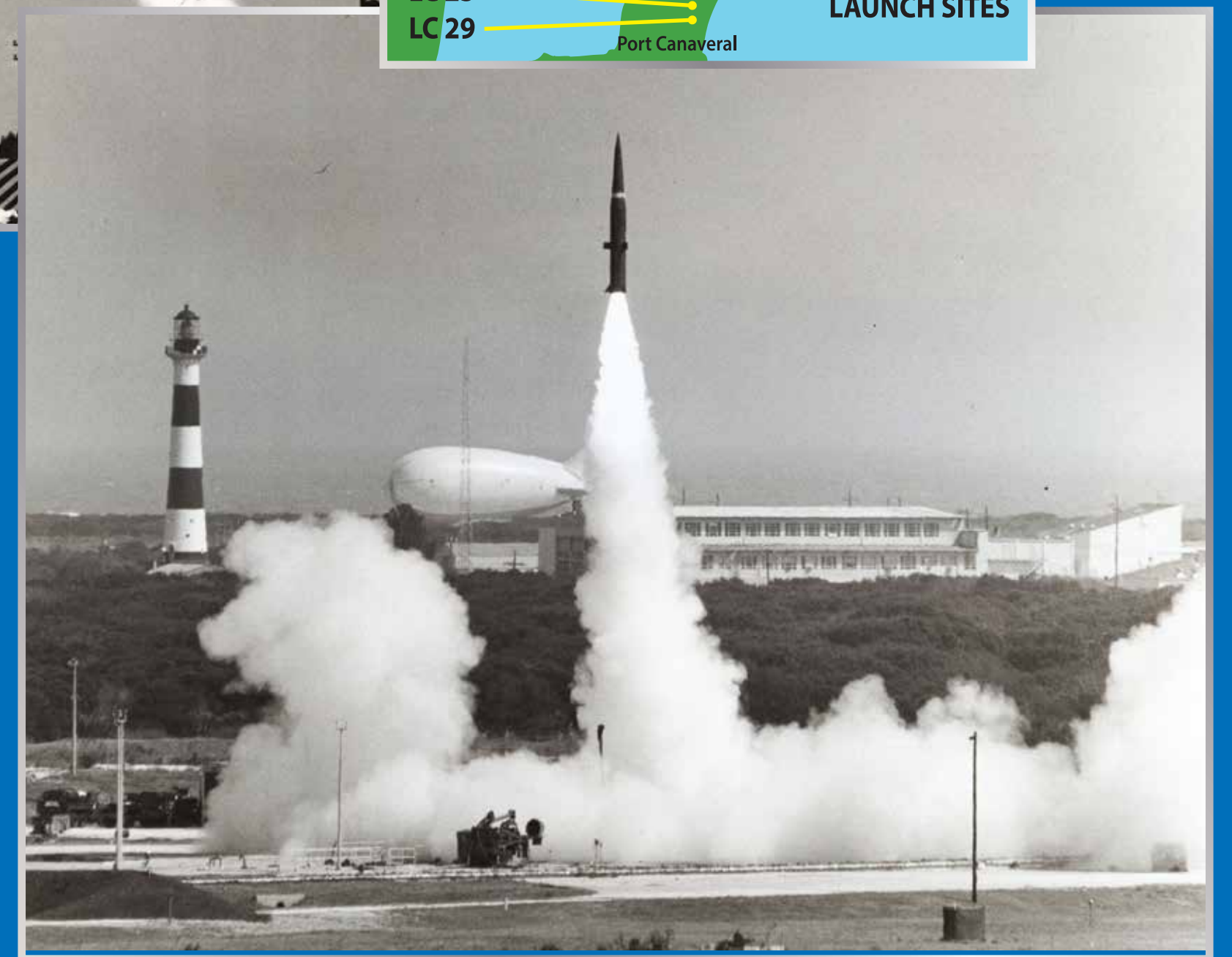


BULL GOOSE MISSILE



USAF MATADOR  
July 8, 1951

Photographs courtesy of the Air Force Space & Missile Museum Cape Canaveral Space Force Station



US ARMY PERSHING MISSILE  
Feb 21, 1973



USAF ATLAS CENTAUR  
February 2002



USAF DELTA II  
August 1993

